

TECHNICAL SPECIFICATIONS 2024

Streatham Space Project is a purpose-built, live performance venue in South London, SW2 4PA. We opened our doors in June 2018 and have been committed to enriching the lives of our community and Greater London ever since.

The venue includes a 120-seat fully-flexible **auditorium** for theatre, music, comedy and dance, a **rehearsal studio** for various workshops and a **café / bar** area for smaller shows, family activities, weddings and more.

Enclosed here you will find information about our technical specifications for

1. the auditorium
2. rehearsal studio
3. bar/cafe

Please submit your [technical questionnaire](#) at least three weeks prior to your booking, so that we can make sure we have everything ready for you and so that we can arrange an appropriate duty technician to look after your technical requirements on the day.

We look forward to working with you.

The SSP Team x

CONTACT INFO

Technical Manager

Liam Narrie – liam@streathamspaceproject.co.uk

Events Producer

Tali Clark - tali@streathamspaceproject.co.uk

Executive Director

Lucy Knight – lucy@streathamspaceproject.co.uk

AUDITORIUM



Our auditorium is an 8.5m x 14.5m fully flexible “black box” room. Our default layout is end-on theatre style with 120 capacity seated or up to 200 standing. The stage size is W:703cm, D:365cm, H:63cm.

Curtains

The auditorium can be used with or without curtains. Our back walls are light grey concrete and we have black serge curtains surrounding the perimeter of the auditorium on a curtain track. Please bear in mind, having curtains or not affects the acoustics within the room.

Operating Position

Shows are operated from the technical gallery at the back of the auditorium, which provides a good view of the stage. There are no video relays. Audio show relay is provided to backstage via shotgun mic rigged for end-on performances.

Please note: access to the tech gallery is via a vertical ladder and is not accessible for wheelchair users or those uncomfortable with heights or climbing ladders. Your safety when using this ladder is not the responsibility of Streatham Space Project. Visitors to the technical gallery are expected to exercise caution and adhere to HSE safety guidelines while using this access point.

Fire Alarm Isolation

All of our performance-space fire and smoke detectors are isolatable. If using haze or smoke effects you will be responsible for ensuring the space is isolated, by informing the Duty Manager in advance. Failure to do so will result in fines as laid out in your contract.

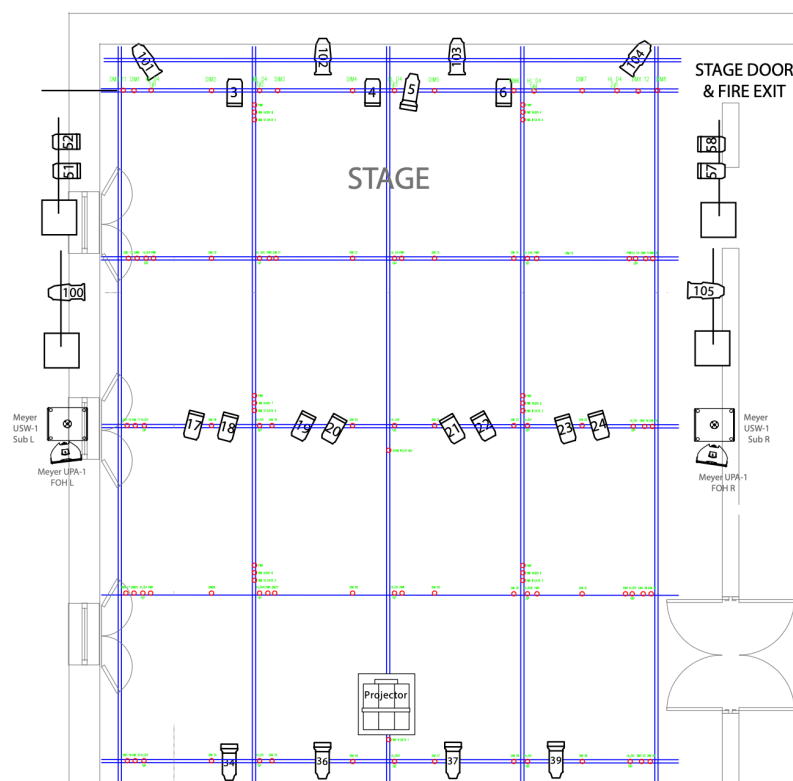
LX

Control is provided via an ETC Ion Xe with 20 fader wing on the tech gallery.

Dimming is provided via 3 x ETC ColourSource ThruPower 24 units stored in our Dimmer Room at the back of the Tech Store.

Our default rig (shown below) is permanently set up in our auditorium, which provides end-on general cover in both warm and cold wash, plus RGB colour and CS, SR and SL specials.

The general rig cannot be moved or re-focussed by visiting companies without prior permission.



Lighting Stock

15 x Selecon Acclaim Fresnel

5 x ETC Source Four Jr (4 with iris and gobo holders)

6 x ETC ColourSource Spot

Various lengths of 5-pin DMX cables

Various lengths of 15amp, 15amp to 16amp, 15amp to 13amp cabling and adaptors

We cannot guarantee stock of spare lamps/bulbs should any blow

Working / House Light

Our house lights are LED (16amp) and are provided via a pre-programmed ETC Echo system that gives uniform cover across the whole auditorium. There are 5 dimness settings to choose from on the control panels, which are situated by the audience door and on the tech gallery. Each unit can also be controlled individually from the lighting desk.

AV

Yamaha TF3 Digital Mixing Console

Playback is provided via a MacMini

We have a video licence for QLab version 4.7 only

Panasonic PT-DX820 Projector

PA System

2 x Meyer UPA-1 Loudspeakers

2 x Meyer USW-1 Subwoofers

2 x dB Technologies FMX12 active stage monitors

6 x Yamaha H5000 Amplifiers

4 x Meyer B2 Electronic Crossovers

2 x Meyer M1 Electronic Crossovers

Microphones

3 x Shure SM58 (wireless handheld)

4 x Phoenix Pro (wireless handheld)

3 x Shure SM58

3 x Shure SM57

1 x Shure Beta 52a

3 x Audix D2

2 x t-bone EM 800

Misc

2 x DBX DB10 passive DI

2 x Behringer DI100 active DI

1 x Behringer stereo DI

2 x RCF 712-A active monitors

~ 10 x mic stands

2 x speaker stands

Various lengths of XLR cabling and 1/4" jack cabling

Microphones and stands are shared between all our performances spaces. Please confirm availability of these with our Technical Manager before including them in your plans.

AV

Projection is provided via a Panasonic PT-DX820 8.2k lumen projector.

Please note this projector is rigged in a fixed position to provide end-on projection onto our screen on the back wall, and it cannot be moved or refocused by visiting companies.

AV Stock

1x Kramer 580R receiver (HDMI/Cat5)

1x Kramer 580T transmitter (HDMI/Cat5)

1x Kramer FC-46XL (audio de-embedder)

1x 5m by 4m projection screen (rigged)

Network

Cat5 ports are available on all IWBs as well as via floor level panels

WiFi access is available via SSP staff and guest WiFi, if you need secure hard-wired bandwidth please contact us in advance to arrange.

Consumables

Streatham Space Project stocks a very small amount of basic consumables. It is advised that visiting companies bring their own stock of consumables including gels and tape with them as we cannot guarantee this stock in-house.

STUDIO





Our studio is a 6m x 7m “white box” room. Standing capacity is 60 and maximum seating capacity in an end-on layout is 50.

LX

10 x Par 16 Birdies

3 x Stairville LED Flood Panels

Sound

2 x RCF ART 712-A active monitors

Control is provided via a Behringer Xeynx 502 Mixer

Microphones and stands are shared between all our performances spaces. Please confirm availability of these with the Technical Manager before including them in your plans.

Projection

Epson EB-S41 SVGA Projector

100” 16:9 fast fold projection screen

Network

Cat5 ports are available on all Internally Internally Wired Bars (IWBs) as well as on floor level and can be patched from the BOH Comms Cupboard.

WiFi access is available via SSP staff and guest WiFi, if you need secure hard-wired bandwidth please contact us in advance to arrange.

BAR/CAFE





Lighting Stock

5 x Stairville LED Flood Panels (fixed)
3 x Par 16 Birdies (fixed)

Audio

Control is provided via a Soundcraft EPM8 Mixer

Sound Stock

2 x RCF ART 712-A active monitors
2 x RCF 702-AS active subwoofers
2 x speaker stands

Wired microphones and stands are shared between all our performances spaces. Please confirm availability of these with our Technical Manager before including them in your plans.

Network

Cat5 ports are available at ceiling level and can be patched from the BOH Comms Cupboard. WiFi access is available via SSP staff and guest WiFi, if you need secure hard-wired bandwidth please contact us in advance to arrange.